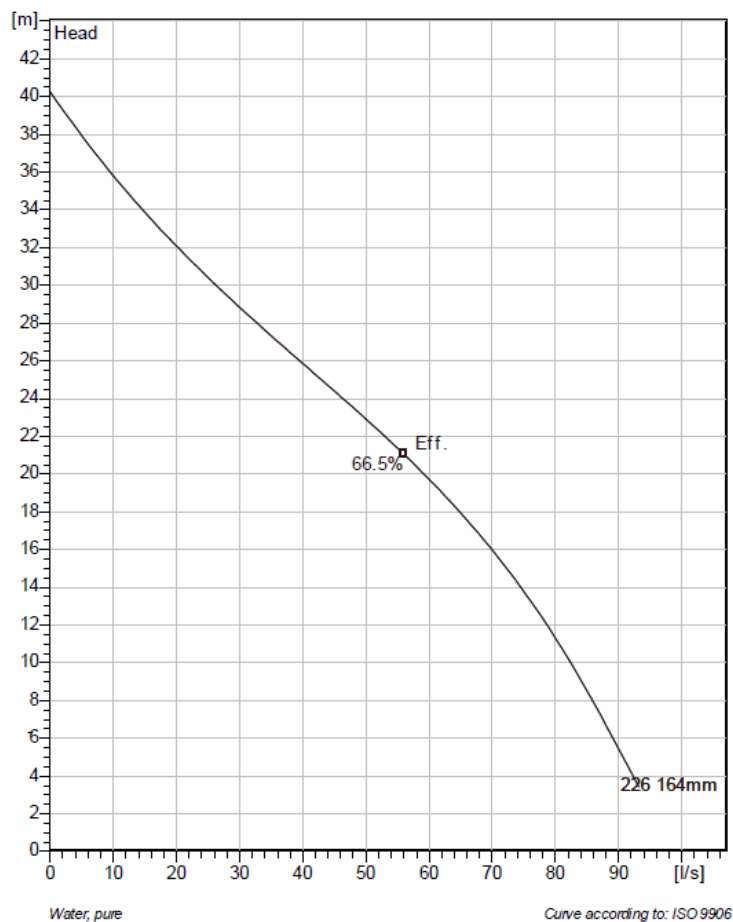




BS 2870 MT 3~ 226 Technical specification



Note: Picture might not correspond to the current configuration.

General

Portable pumps ideal for applications in which the water or liquid contains concentrations of abrasives.

Impeller

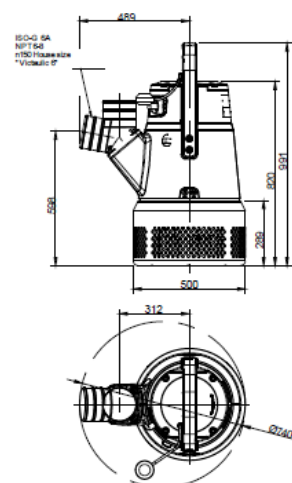
| | |
|---------------------|------------|
| Impeller material | Hard-Iron™ |
| Outlet width | 150 mm |
| Inlet diameter | 111 mm |
| Impeller diameter | 164 mm |
| Number of blades | 3 |
| Throughlet diameter | 35 mm |

Motor

| | |
|------------------|----------------------------|
| Motor # | B2870.180 21-18-2BB-W 18KW |
| Stator variant | 2 |
| Frequency | 50 Hz |
| Rated voltage | 400 V |
| Number of poles | 2 |
| Phases | 3~ |
| Rated power | 18 kW |
| Rated current | 32 A |
| Starting current | 215 A |
| Rated speed | 2895 1/min |
| Power factor | |
| 1/1 Load | 0.90 |
| 3/4 Load | 0.87 |
| 1/2 Load | 0.79 |
| Efficiency | |
| 1/1 Load | 89.0 % |
| 3/4 Load | 90.5 % |
| 1/2 Load | 91.0 % |

Configuration

Installation: S - Portable Semi permanent, Wet



*Designed for Vitracote Coating according to ANSIAWWA C90047

SCREEN OPENING 112

BS 2870 180 MT

Weight 18kg
Pump
CB

| | | | | |
|---------|------------|------------|--------------------------|-------------|
| Project | Project ID | Created by | Created on 2014-04-11 | Last update |
|---------|------------|------------|--------------------------|-------------|



BS 2870 MT 3~ 226



Performance curve

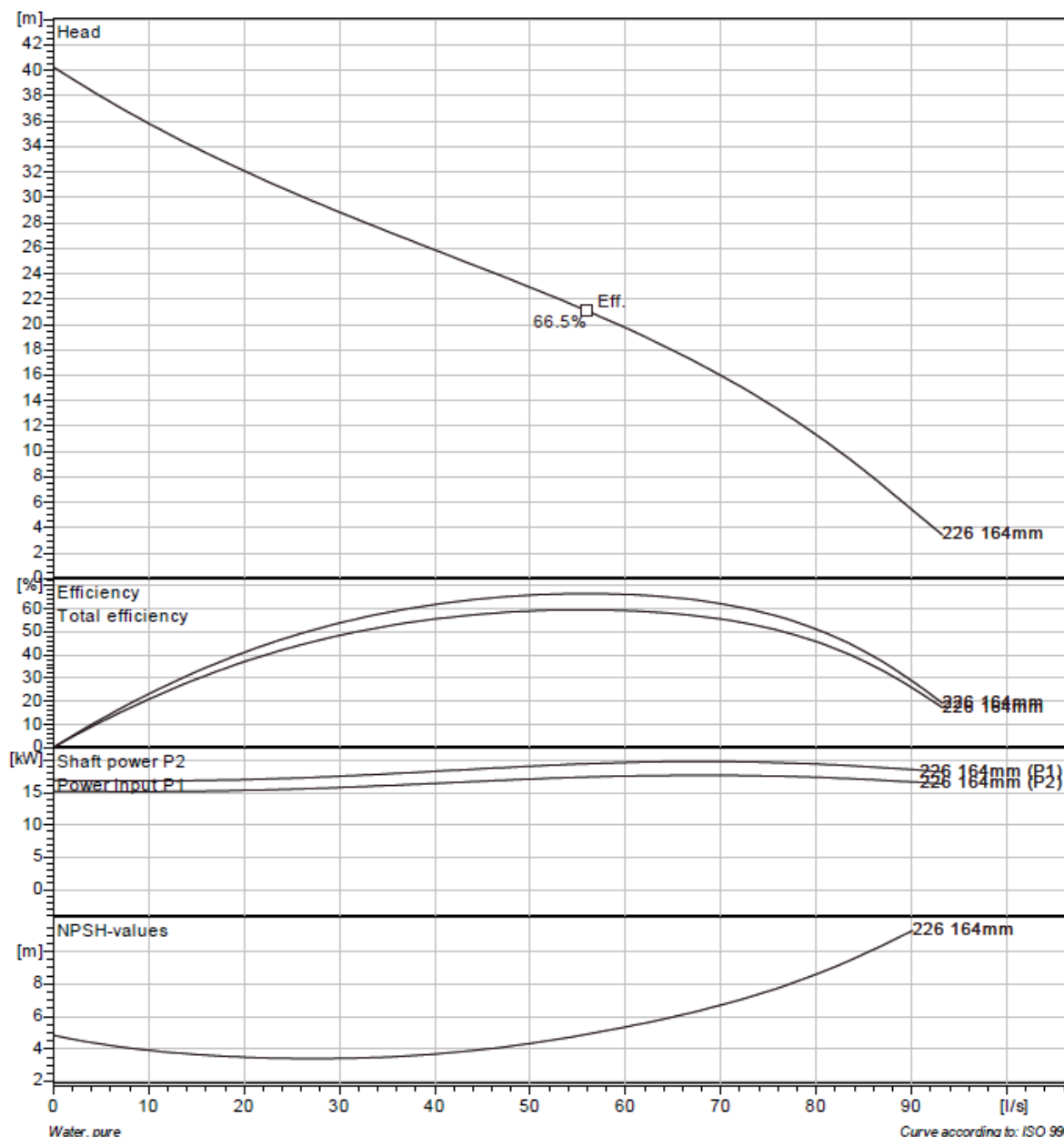
Pump

| | |
|---------------------|--------|
| Outlet width | 150 mm |
| Inlet diameter | 111 mm |
| Impeller diameter | 164 mm |
| Number of blades | 3 |
| Throughlet diameter | 35 mm |

Motor

| | |
|------------------|----------------------------|
| Motor # | B2870.180 21-18-2BB-W 18KW |
| Stator variant | 2 |
| Frequency | 50 Hz |
| Rated voltage | 400 V |
| Number of poles | 2 |
| Phases | 3~ |
| Rated power | 18 kW |
| Rated current | 32 A |
| Starting current | 215 A |
| Rated speed | 2895 1/min |

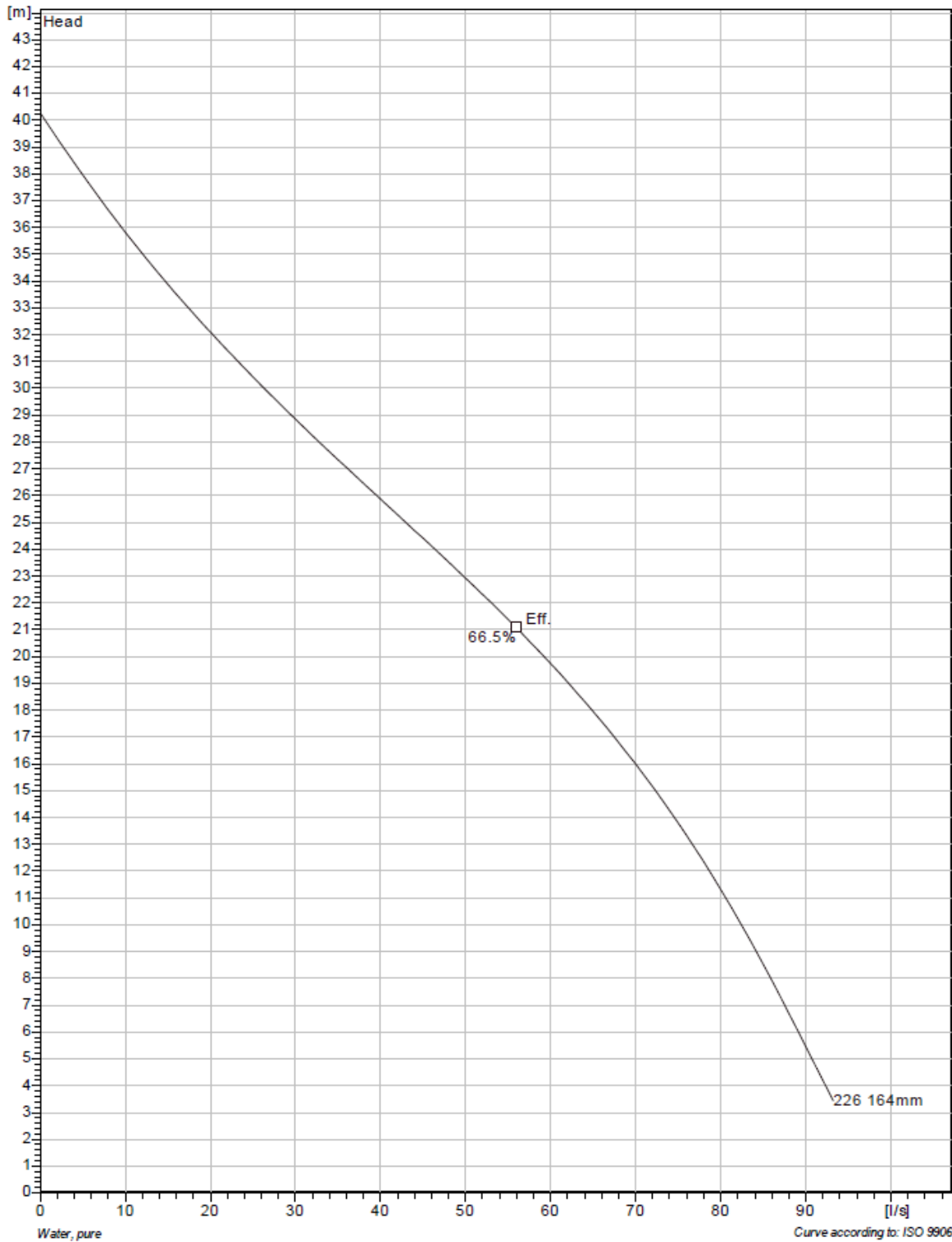
| | |
|--------------|--------|
| Power factor | |
| 1/1 Load | 0.90 |
| 3/4 Load | 0.87 |
| 1/2 Load | 0.79 |
| Efficiency | |
| 1/1 Load | 89.0 % |
| 3/4 Load | 90.5 % |
| 1/2 Load | 91.0 % |



| | | | | |
|---------|------------|------------|--------------------------|-------------|
| Project | Project ID | Created by | Created on 2014-04-11 | Last update |
|---------|------------|------------|--------------------------|-------------|



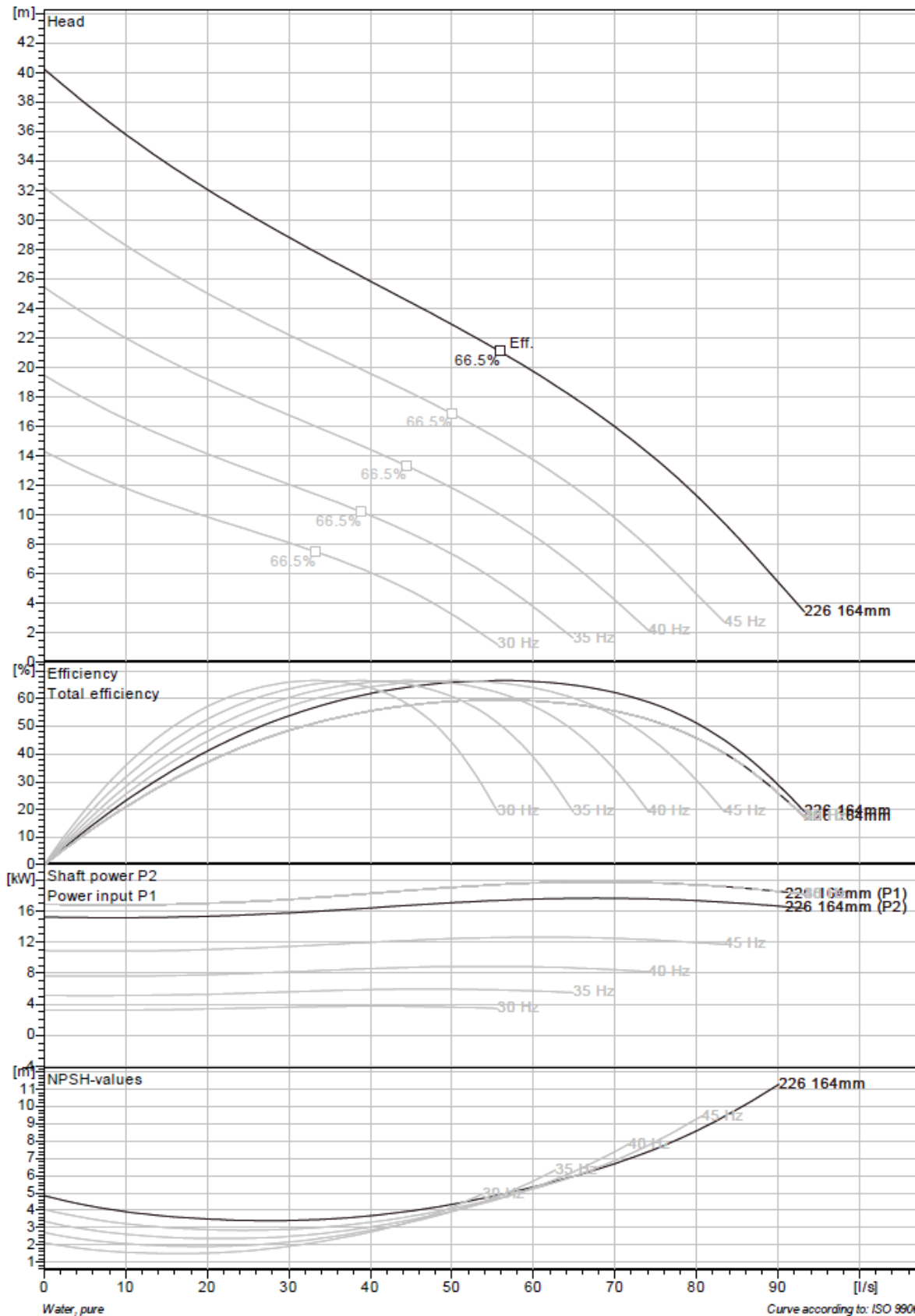
BS 2870 MT 3~ 226 Duty Analysis



| Project | Project ID | Created by | Created on | Last update |
|---------|------------|------------|------------|-------------|
| | | | 2014-04-11 | |



BS 2870 MT 3~ 226 VFD Curve



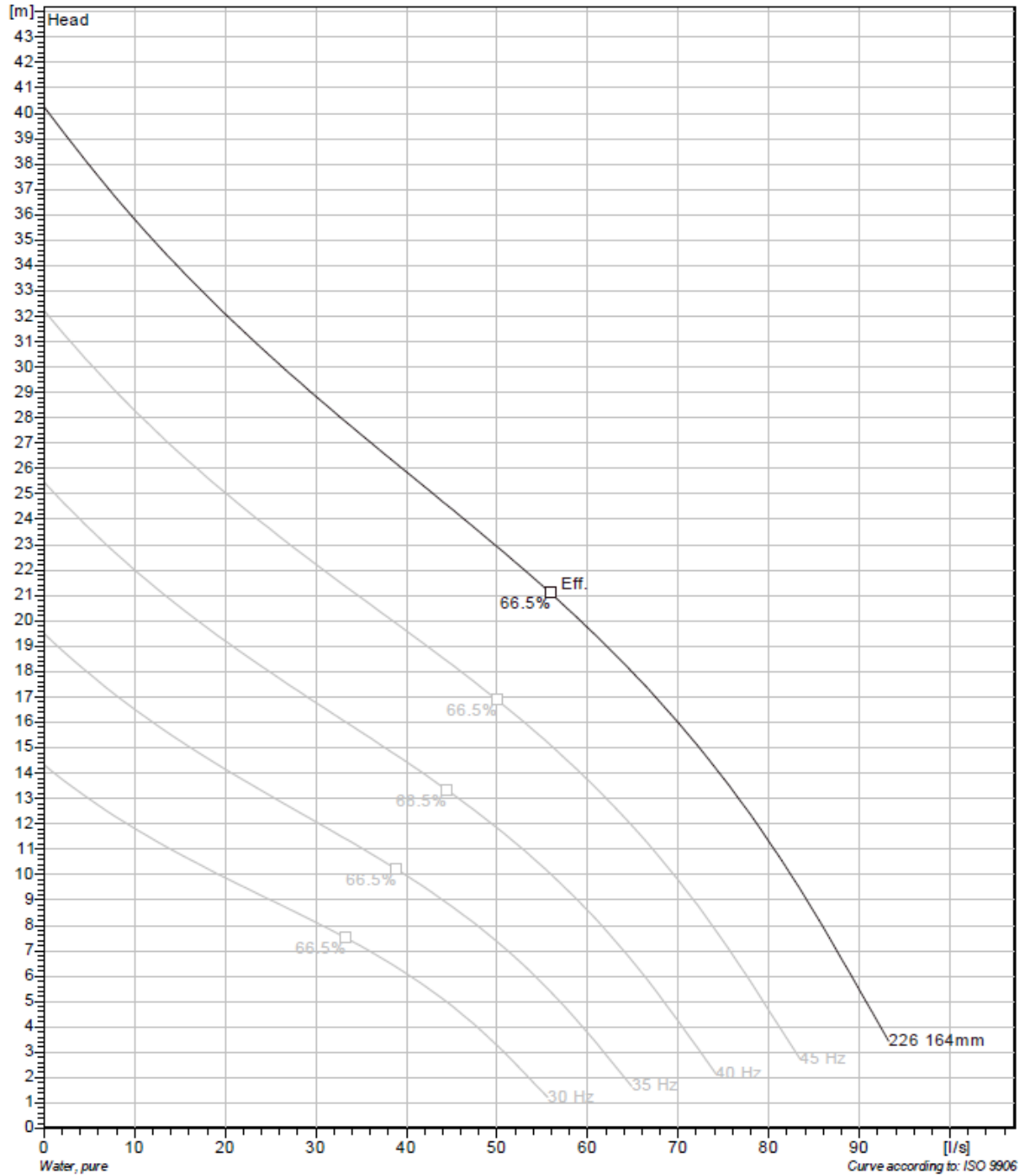
Curve according to: ISO 9906

| Project | Project ID | Created by | Created on | Last update |
|---------|------------|------------|------------|-------------|
| | | | 2014-04-11 | |



BS 2870 MT 3~ 226

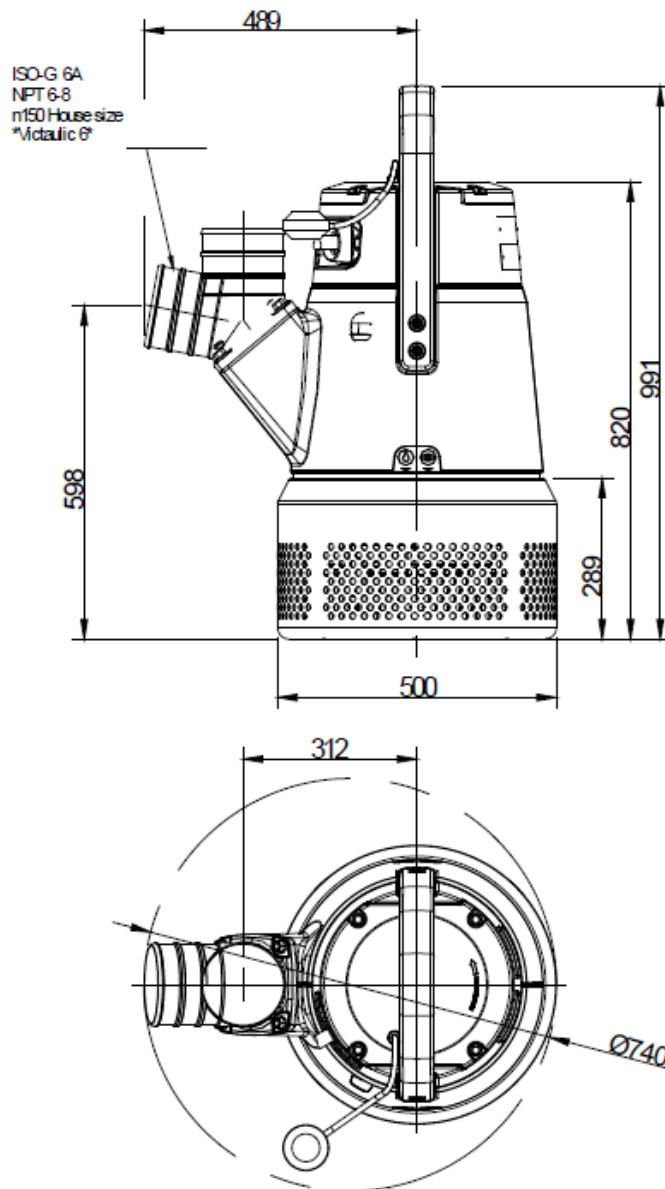
VFD Analysis



| Project | Project ID | Created by | Created on | Last update |
|---------|------------|------------|------------|-------------|
| | | | 2014-04-11 | |

BS 2870 MT 3~ 226

Dimensional drawing



*Designed for *Metailic Coupling,
according to ANSI/AWWA C806-97

SCREEN OPENINGn12

| |
|-------------|
| Weight (kg) |
| Pump |
| 125 |

BS 2870.180 MT

| | | | | |
|---------|------------|------------|--------------------------|-------------|
| Project | Project ID | Created by | Created on 2014-04-11 | Last update |
|---------|------------|------------|--------------------------|-------------|