



BS 2840 MT 3~ 226



Performance curve

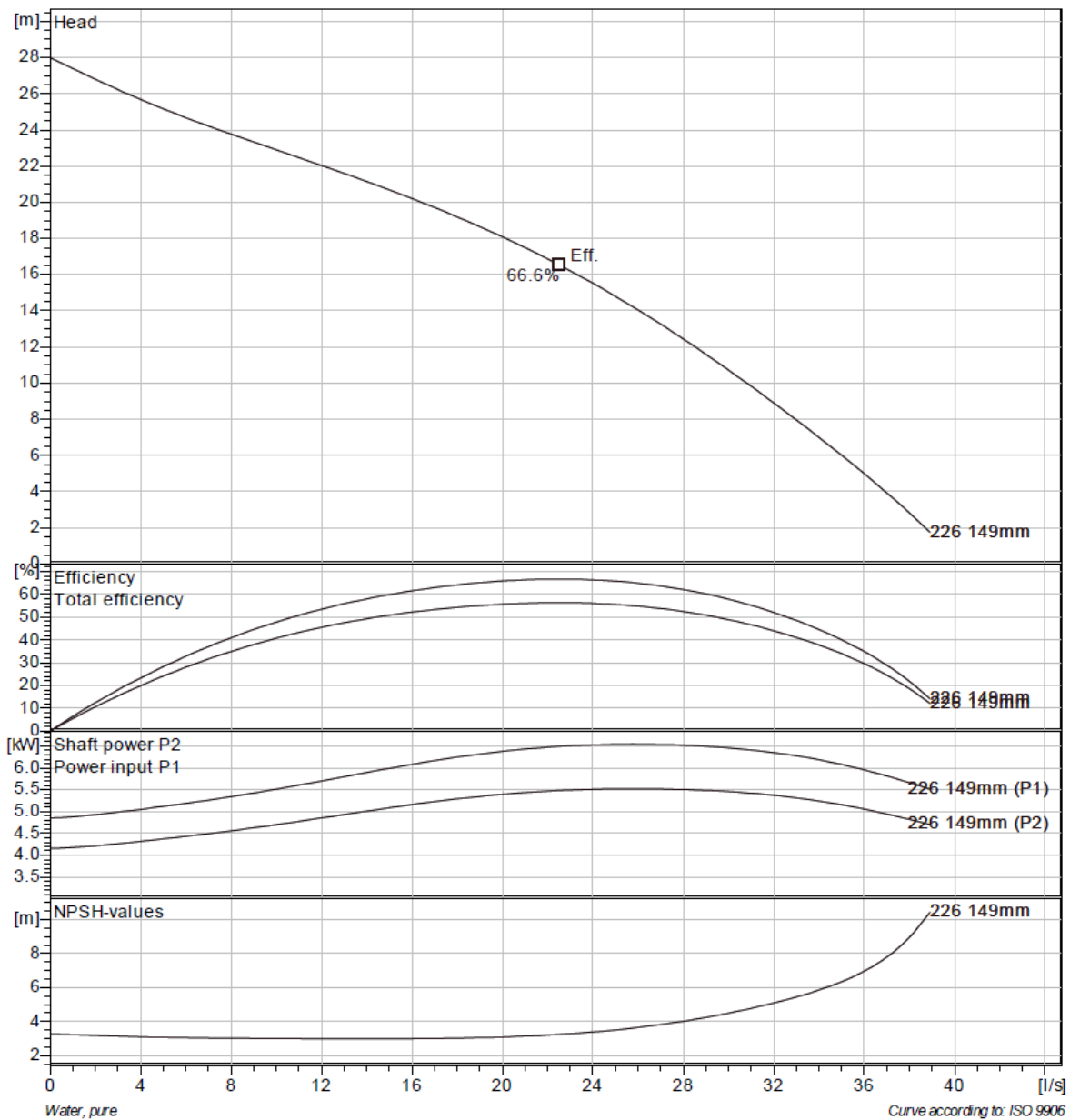
Pump

Outlet width	100 mm
Inlet diameter	90 mm
Impeller diameter	149 mm
Number of blades	2

Motor

Motor #	B2840.180 15-14-2BB-W 5.6KW
Stator variant	5
Frequency	50 Hz
Rated voltage	400 V
Number of poles	2
Phases	3~
Rated power	5.6 kW
Rated current	11 A
Starting current	75 A
Rated speed	2890 1/min

Power factor	
1/1 Load	0.89
3/4 Load	0.84
1/2 Load	0.73
Efficiency	
1/1 Load	84.3 %
3/4 Load	85.5 %
1/2 Load	84.9 %



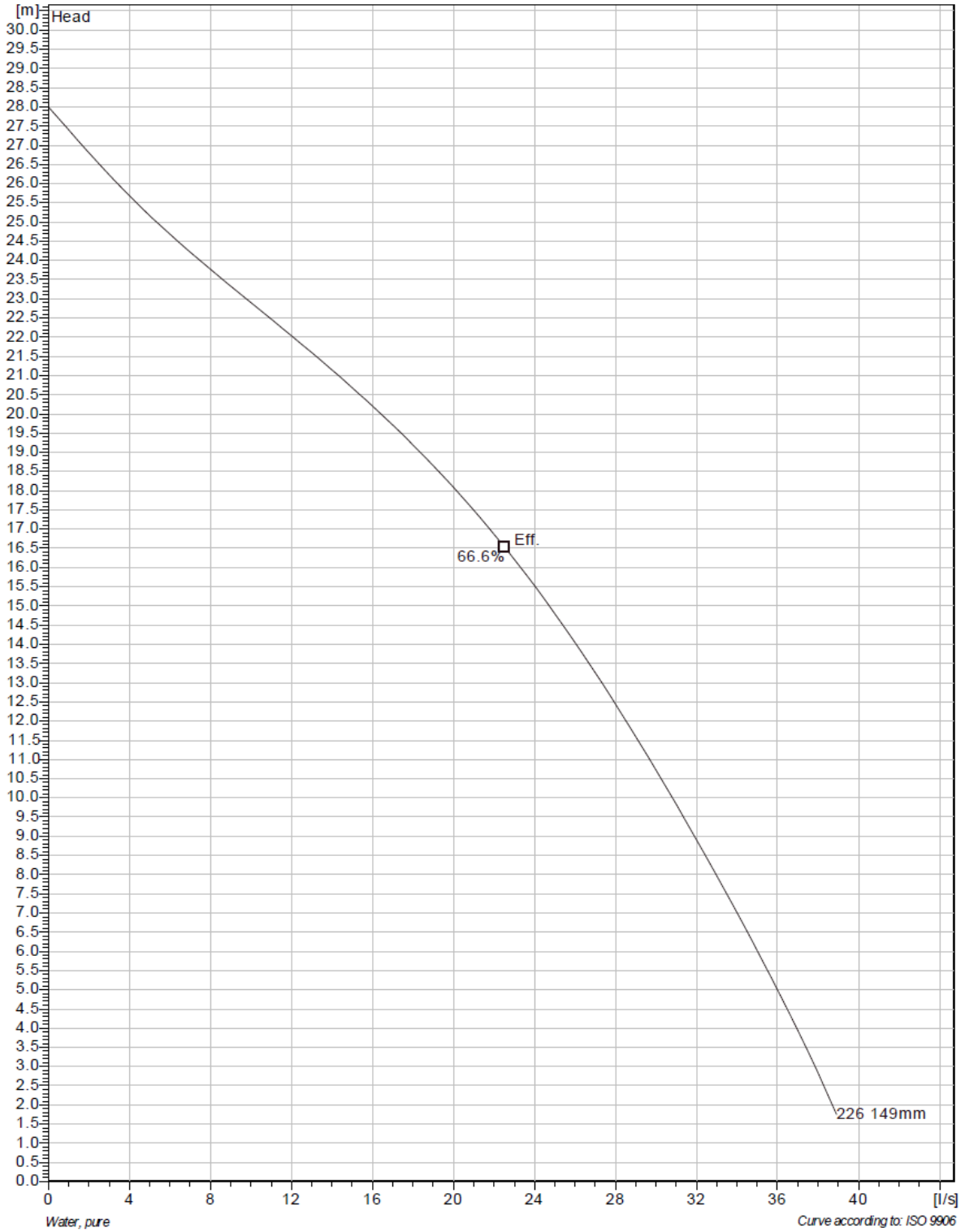
Project	Project ID	Created by	Created on	Last update
			2014-04-11	



BS 2840 MT 3~ 226



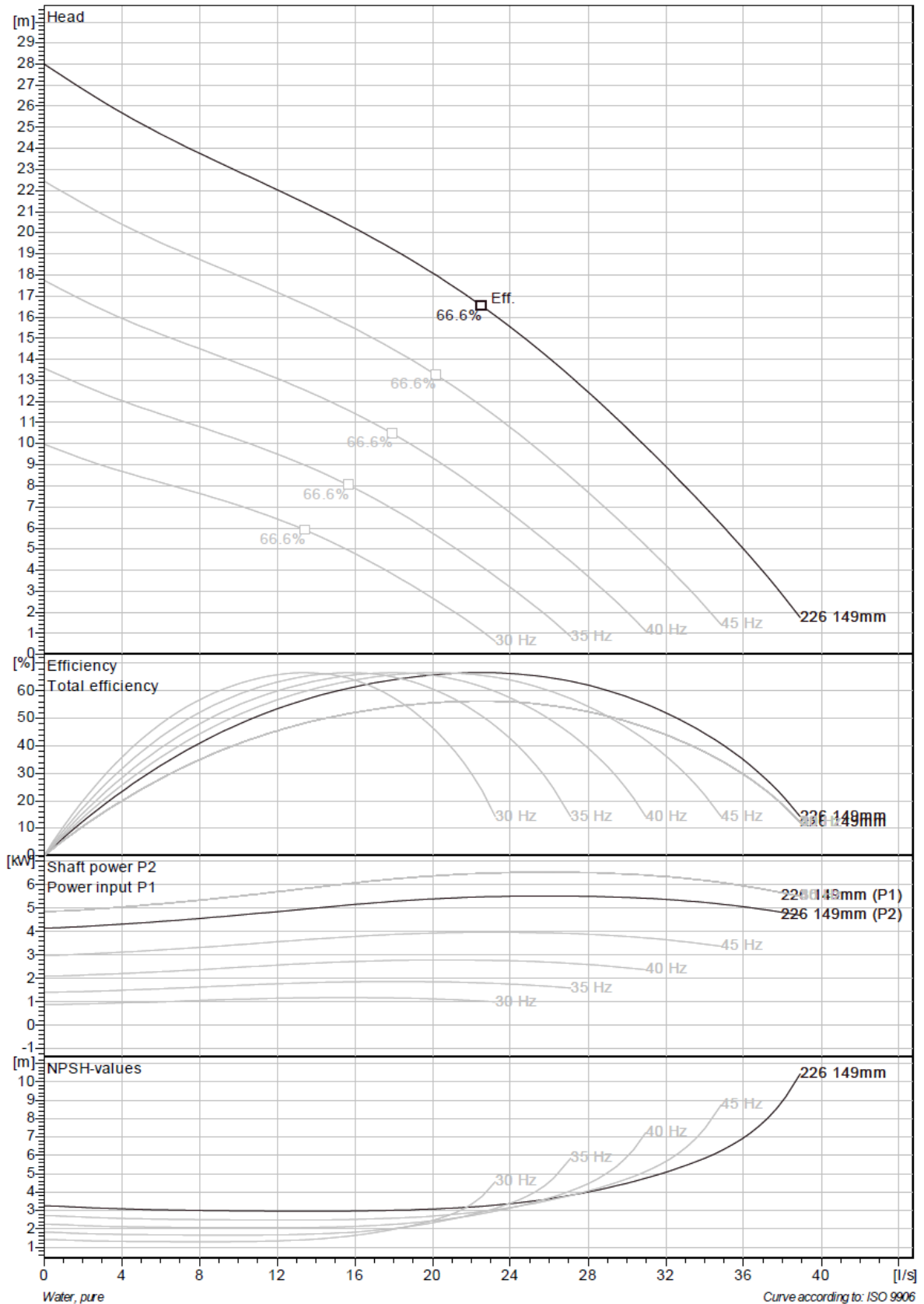
Duty Analysis



Project	Project ID	Created by	Created on	Last update
			2014-04-11	



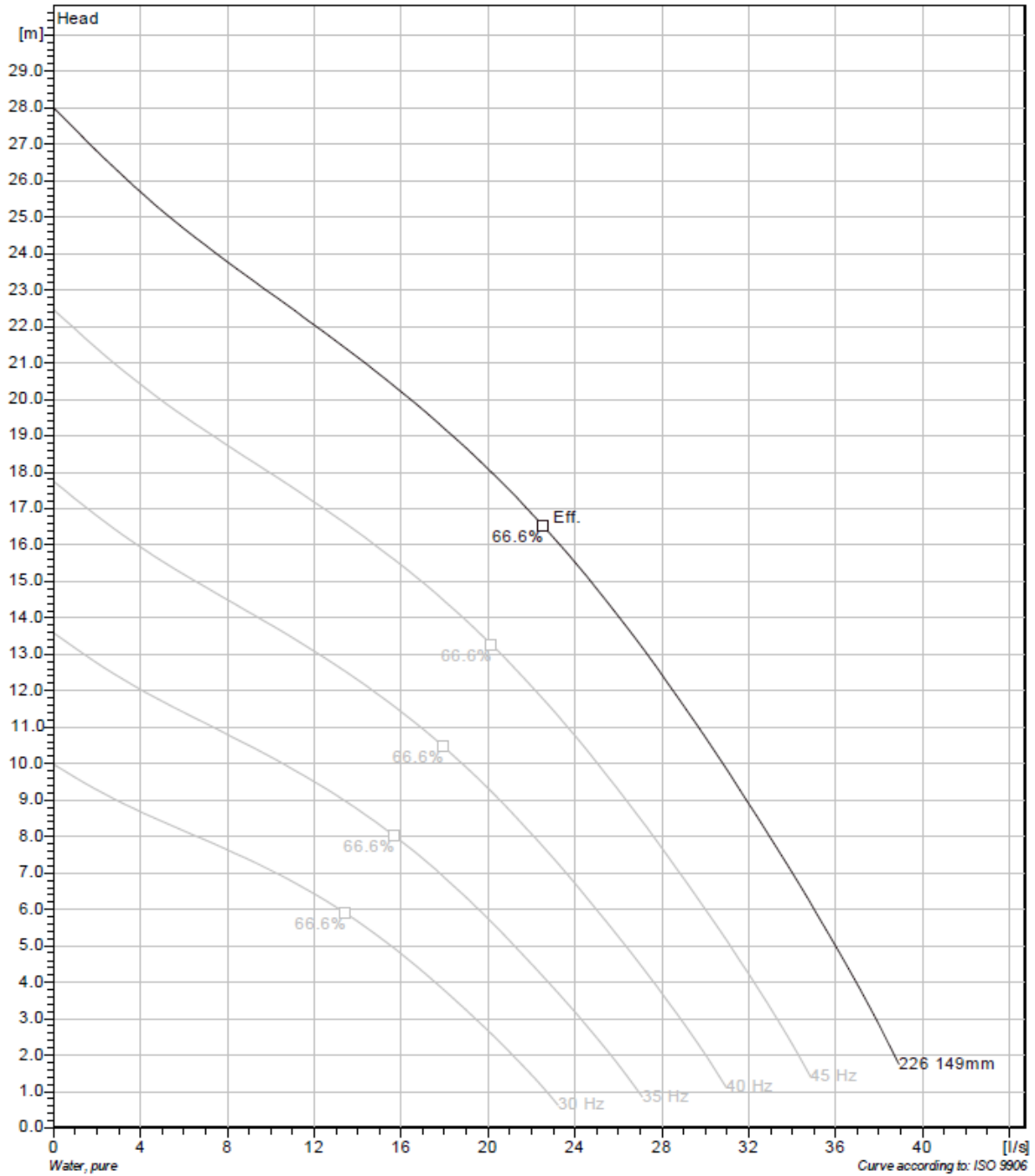
BS 2840 MT 3~ 226 VFD Curve



Project	Project ID	Created by	Created on	Last update
			2014-04-11	



BS 2840 MT 3~ 226 VFD Analysis

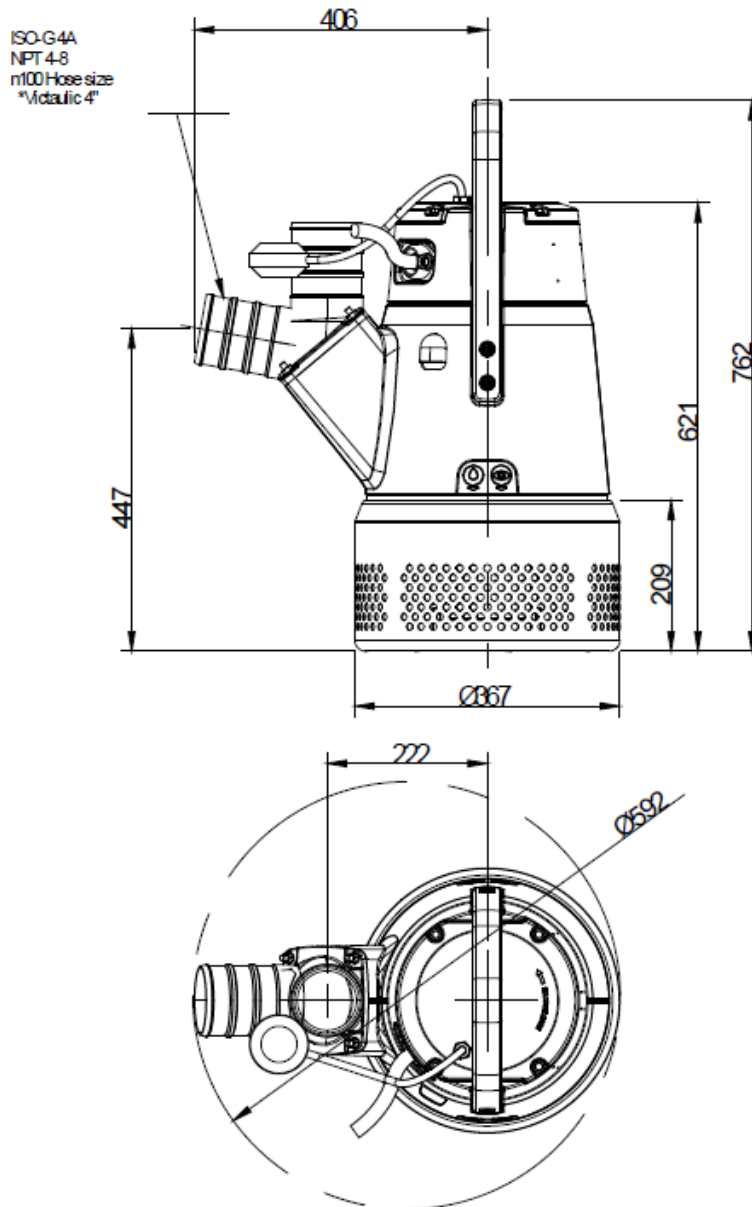


Project	Project ID	Created by	Created on	Last update
			2014-04-11	



BS 2840 MT 3~ 226

Dimensional drawing



SCREEN OPENING n 10

Weight (kg)
Pump
56

BS,KS 2840.180 MT

Project	Project ID	Created by	Created on 2014-04-11	Last update
---------	------------	------------	--------------------------	-------------