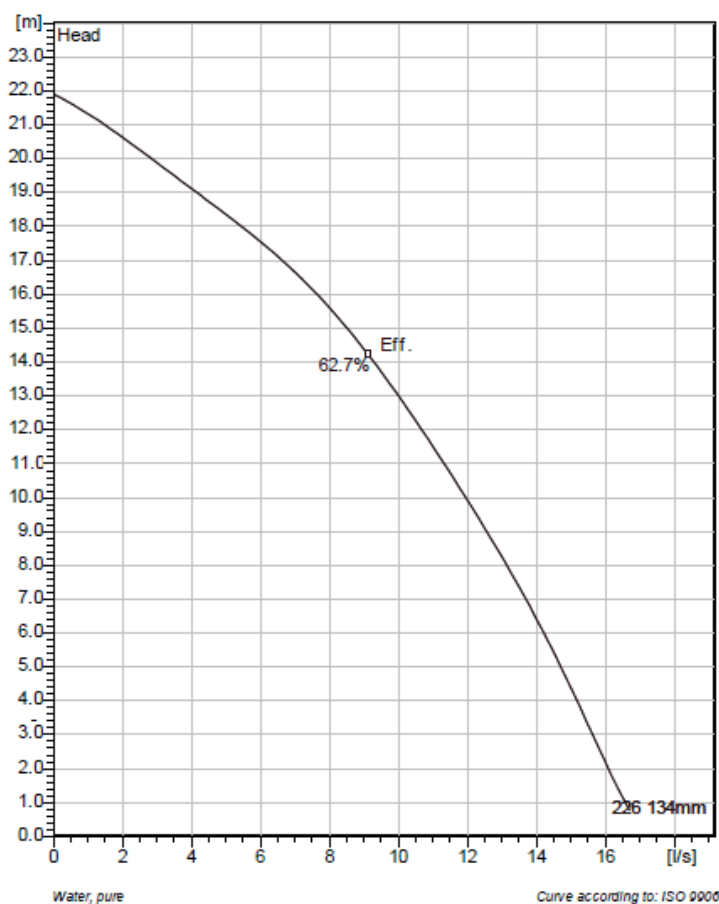




## BS 2620 MT 3~ 226

### Technical specification



Installation: S - Portable Semi permanent, Wet



Note: Picture might not correspond to the current configuration.

#### General

Portable pumps ideal for applications in which the water or liquid contains concentrations of abrasives.

#### Impeller

|                   |                         |
|-------------------|-------------------------|
| Impeller material | Hard-Iron <sup>TM</sup> |
| Outlet width      | 75 mm                   |
| Inlet diameter    | 63 mm                   |
| Impeller diameter | 134 mm                  |
| Number of blades  | 5                       |

#### Motor

|                  |                             |
|------------------|-----------------------------|
| Motor #          | B2620.172 13-10-2BB-W 2.2KW |
| Stator variant   | 1                           |
| Frequency        | 50 Hz                       |
| Rated voltage    | 400 V                       |
| Number of poles  | 2                           |
| Phases           | 3~                          |
| Rated power      | 2.2 kW                      |
| Rated current    | 4.7 A                       |
| Starting current | 0 A                         |
| Rated speed      | 2765 1/min                  |
| Power factor     |                             |
| 1/1 Load         | 0.84                        |
| 3/4 Load         | 0.78                        |
| 1/2 Load         | 0.65                        |
| Efficiency       |                             |
| 1/1 Load         | 80.8 %                      |
| 3/4 Load         | 83.1 %                      |
| 1/2 Load         | 83.4 %                      |

#### Configuration

| Project | Project ID | Created by | Created on | Last update |
|---------|------------|------------|------------|-------------|
|         |            |            | 2014-04-11 |             |



## BS 2620 MT 3~ 226

### Performance curve



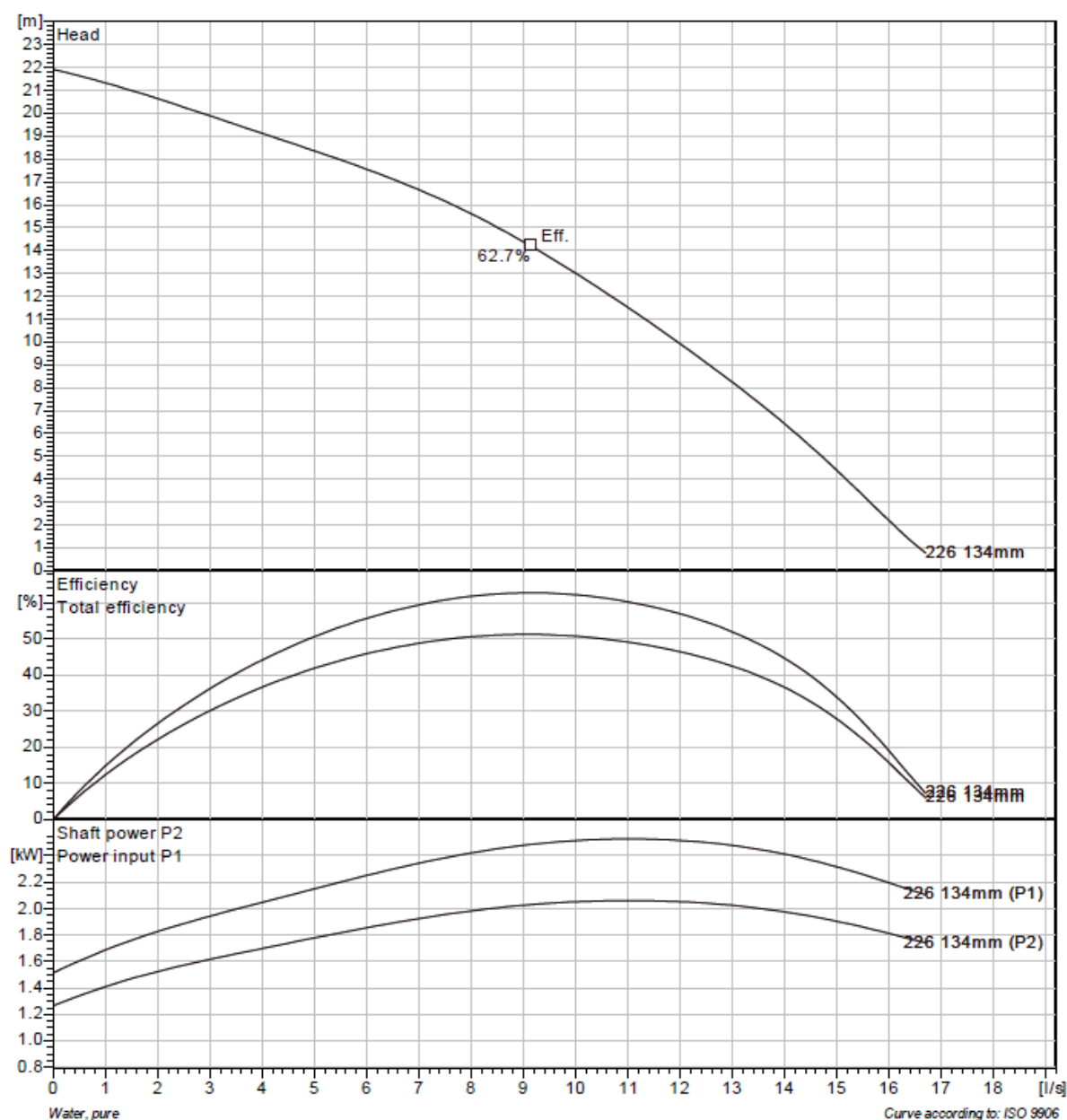
#### Pump

Outlet width 75 mm  
Inlet diameter 63 mm  
Impeller diameter 134 mm  
Number of blades 5

#### Motor

Motor # B2620.172 13-10-2BB-W 2.2KW  
Stator variant 1  
Frequency 50 Hz  
Rated voltage 400 V  
Number of poles 2  
Phases 3~  
Rated power 2.2 kW  
Rated current 4.7 A  
Starting current 0 A  
Rated speed 2765 1/min

Power factor  
1/1 Load 0.84  
3/4 Load 0.78  
1/2 Load 0.65  
Efficiency  
1/1 Load 80.8 %  
3/4 Load 83.1 %  
1/2 Load 83.4 %

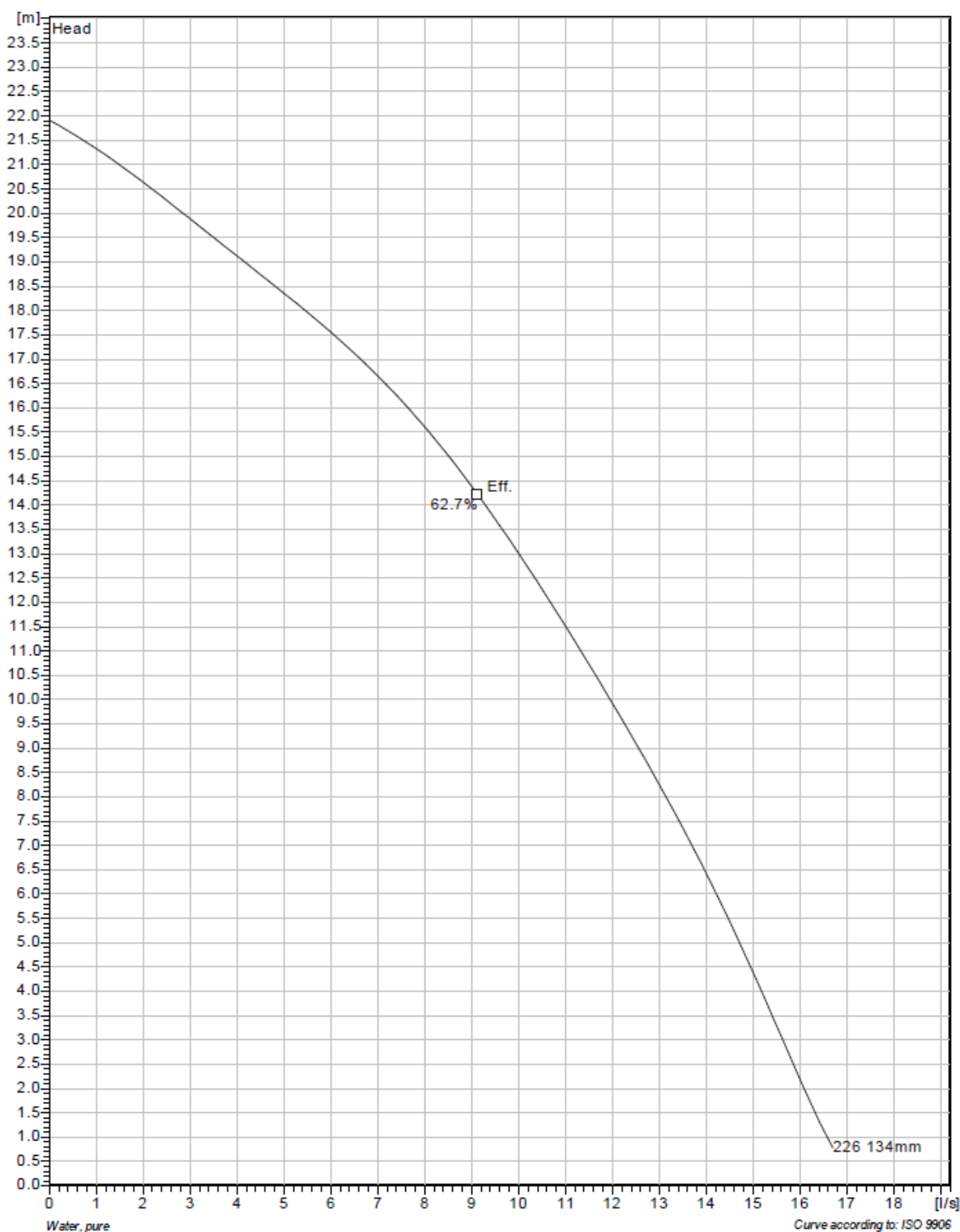


| Project | Project ID | Created by | Created on | Last update |
|---------|------------|------------|------------|-------------|
|         |            |            | 2014-04-11 |             |



## BS 2620 MT 3~ 226

### Duty Analysis

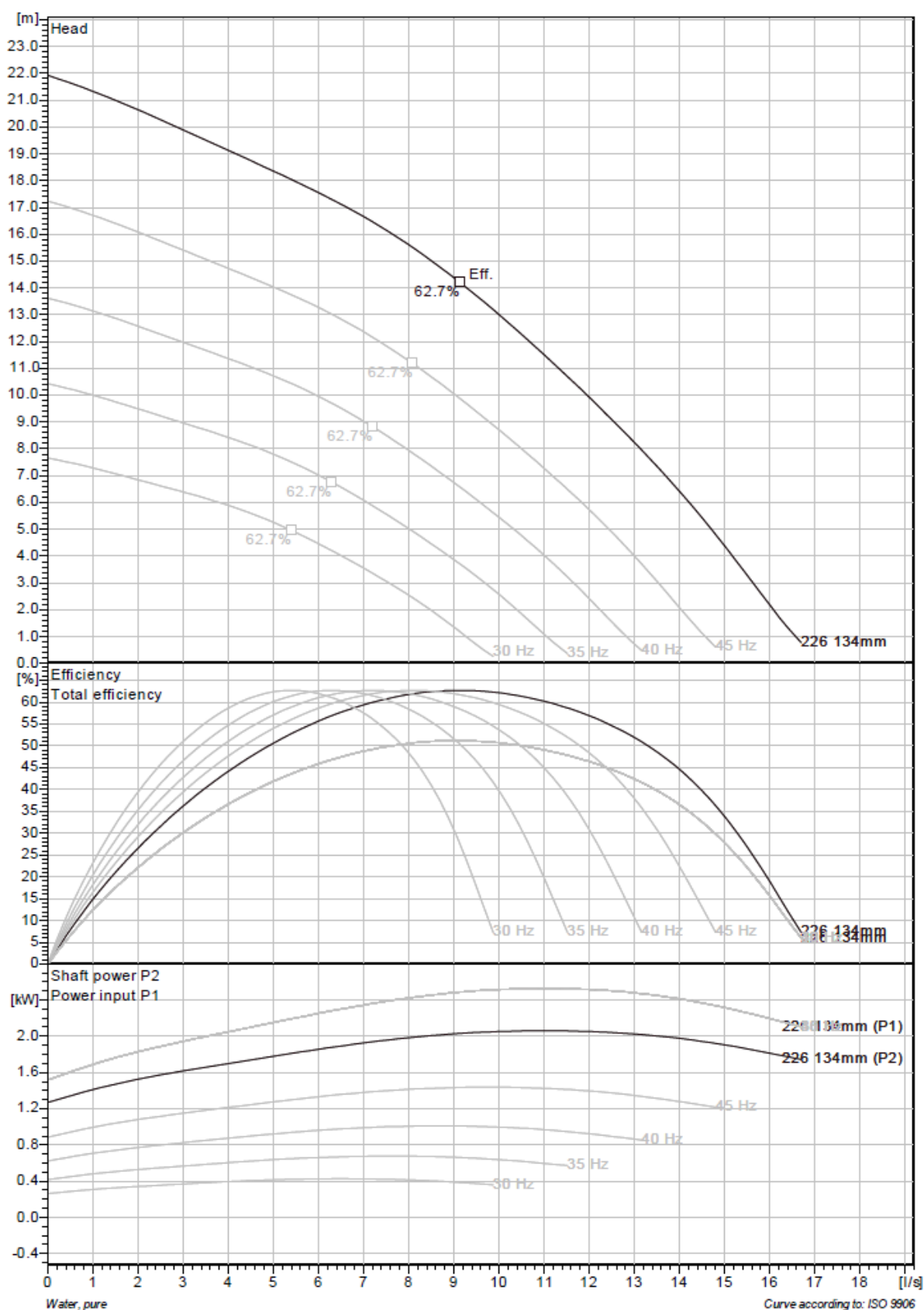


|         |            |            |                          |             |
|---------|------------|------------|--------------------------|-------------|
| Project | Project ID | Created by | Created on<br>2014-04-11 | Last update |
|---------|------------|------------|--------------------------|-------------|



## BS 2620 MT 3~ 226

### VFD Curve

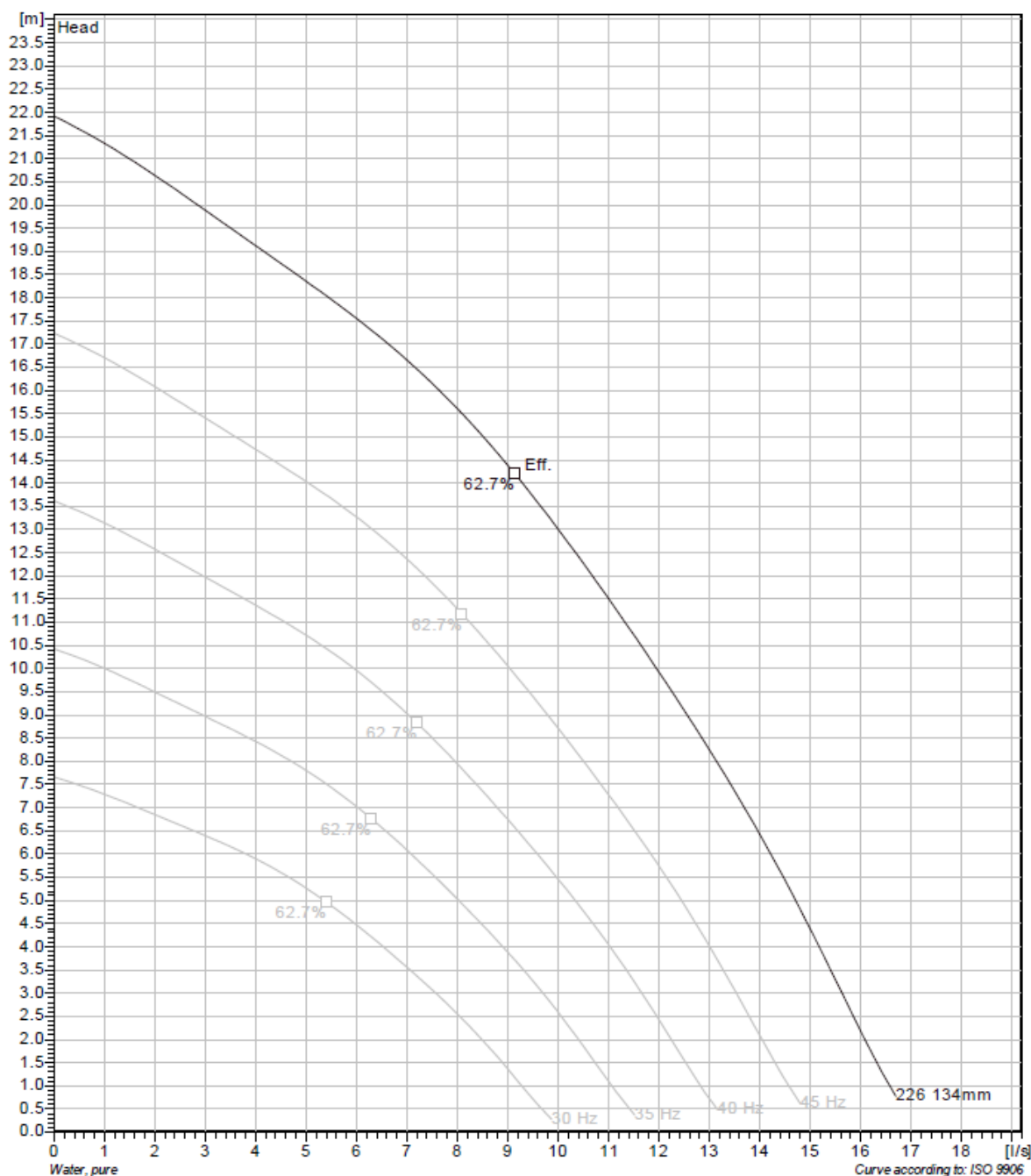


|         |            |            |            |             |
|---------|------------|------------|------------|-------------|
| Project | Project ID | Created by | Created on | Last update |
|         |            |            | 2014-04-11 |             |



## BS 2620 MT 3~ 226

### VFD Analysis



|         |            |            |            |             |
|---------|------------|------------|------------|-------------|
| Project | Project ID | Created by | Created on | Last update |
|         |            |            | 2014-04-11 |             |